





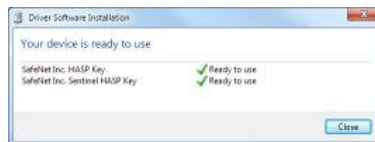
Sound Insulation Prediction Software

Instructions to Install INSUL

Before installing INSUL you should close any open applications and log on as a user with sufficient access rights to install programs. This normally means having Administrator rights.

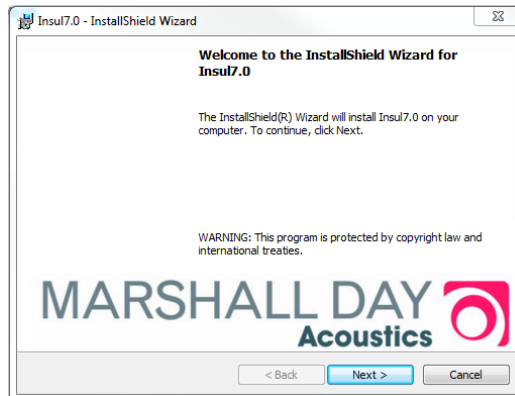
Install INSUL

1. When you purchase INSUL you will receive a USB flash drive  with the installation files (including this file), and a USB key  that is needed to run the software. Plug both keys into spare USB ports on your computer. In most systems that are connected to the Internet Windows will automatically locate and install the correct drivers for the Safenet key. This will take perhaps 30 seconds to a minute, after which you will get a message that the drivers are installed and then the small LED in the tip of the key will light up.

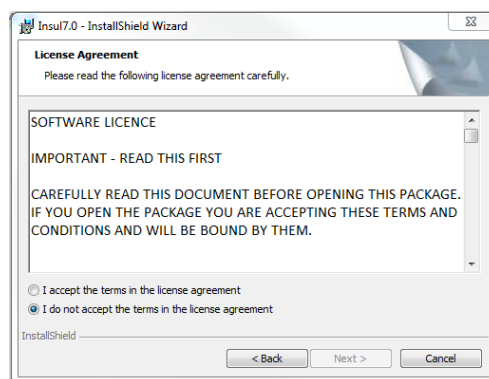


2. If this does not happen then run the file HASPUserSetup.exe from the INSUL USB flash drive. This will install the drivers for the Safenet USB key. The small LED in the tip of the key will light up.
3. You should now install INSUL from the USB flash drive by double clicking on the file "Setup.exe".

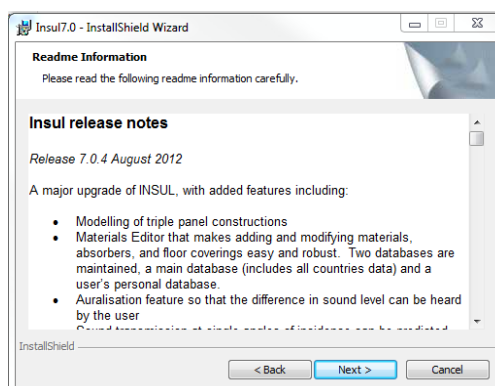
4. Read the instructions on the Welcome page and click the next button.



5. Read the Software license Agreement and if you accept the terms of the licence, click "I accept the terms in the licence agreement", then click the next button.

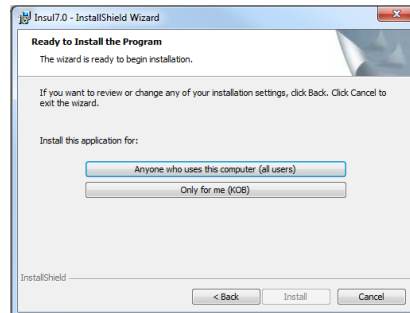


6. If you wish to read the INSUL release notes you may scroll down the Readme Information then click the Next button.



7. To choose a particular destination directory for INSUL's files click the Browse button. To accept the default destination directory click the Next button.

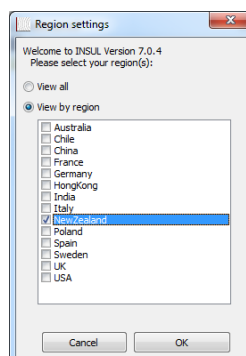
8. You will be asked if you want to install INSUL for anyone who uses the computer or for the user only. It is normal to choose the default which is for anyone who uses the computer. (see step 12 for extra information)



9. The program will now be installed and you can click Finish to exit the installation Wizard. You can now run the program from the normal Windows “Start “ menu. The About form should display. Click Ok.



10. INSUL will display a form allowing you to choose what materials databases you wish to display. It is recommended that you first choose to display just one region to avoid being overwhelmed by the number of materials. You can change this later from the settings menu.



11. INSUL is updated from time to time with new releases. These are known by their release number, for instance version 8.0.4 is release 4 of version 8.0 The user can check for updates with the “Check for updates” button on the About form, or check the tick box on that form “automatically check for updates”. It is a good time now to check for updates and download and install the latest release. There may be a

file update.exe on the USB flash drive, if so you should now run that file (also check <http://www.insul.co.nz/download/update.exe>).

12. Normally INSUL will be installed on a computer by a user and run just by that user. If several people wish to use INSUL on the same computer some extra setup may be required. INSUL installs the materials databases to two different locations, the main databases (which the user should not edit) are installed to [CommonAppData], which in Windows 7 is C:\Program Data, and the user customisable databases (which the user can modify and which INSUL new releases do not usually modify) to [AppData] which in Windows 7 is C:\Users***\AppData\Roaming (where *** is the users login name).