

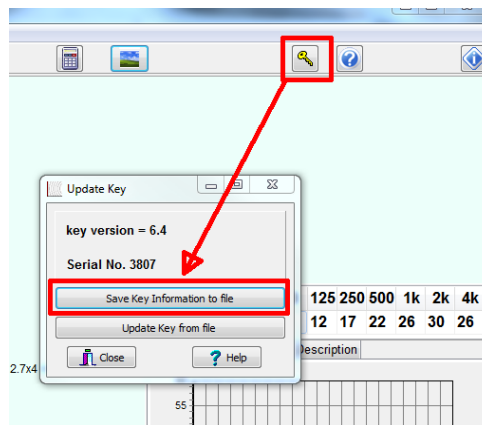


Sound Insulation Prediction Software

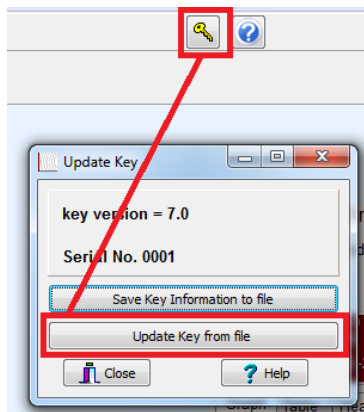
1. Please Contact your distributor for the cost of the upgrade

Updating the USB Key

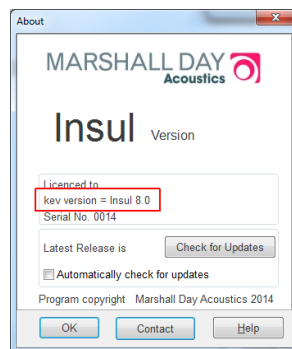
2. Please ensure your Sentinel/Hasp key drivers are up to date. The latest drivers can be downloaded from <http://www.insul.co.nz/media/15671/HASPUserSetup.exe>. Download and run this file.
3. Start INSUL and click on the button on the toolbar that has a picture of a key. You will see the screen below.



4. Save the key information to a file by clicking on the button labelled "Save Key Information to file" and email this c2v file to your distributor. The distributor will email back a v2c file to update your key to INSUL 8.0.
5. Use INSUL again and click on the key button again and this time use the "Update Key from File" to read in the v2c file that was sent to you.



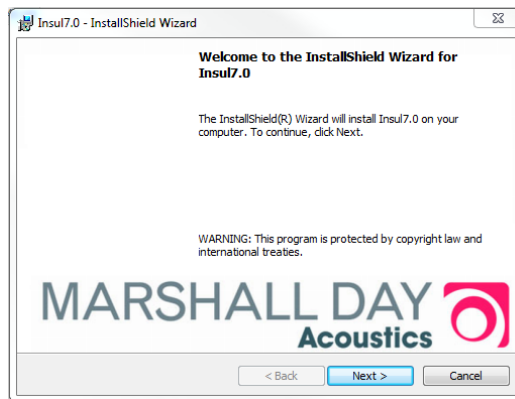
6. Re-start INSUL, the initial screen should show the following.



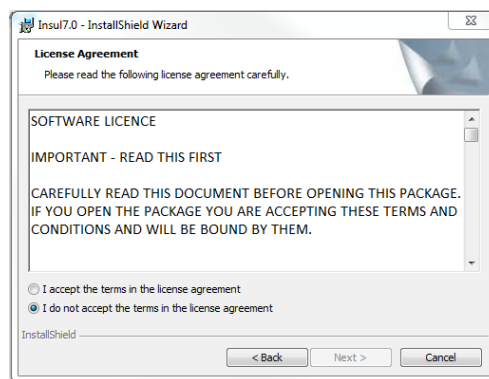
You can now install INSUL version 8.0, following the installation instructions below. Note that you do not have to un-install any previous versions of INSUL before installing version 8.0. If you have added materials to the user database it is strongly recommended that you back up the user files.

Install Version 8.0

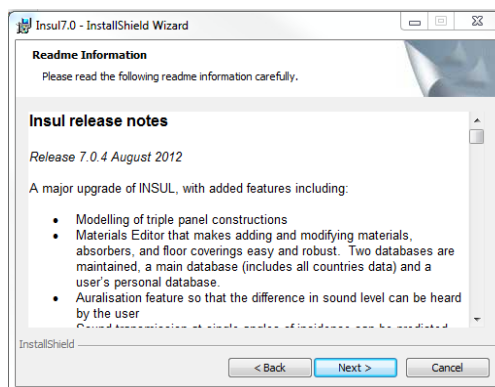
1. Before installing INSUL, you should close any open applications and log on as a user with sufficient access rights to install programs. This normally means having Administrator rights.
2. Go to the Insul website (www.insul.co.nz) and download the setup file from the link [Download version 8.0](#). Run the file setup.exe.
3. Read the instructions on the Welcome page and click the next button.



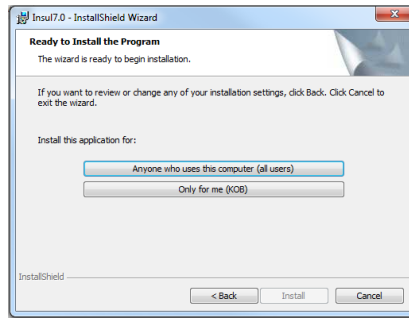
4. Read the Software license Agreement and if you accept the terms of the licence, click “I accept the terms in the licence agreement”, then the next button.



5. If you wish to read the INSUL release notes you may scroll down the Readme Information then click the Next button.



6. To choose a particular destination directory for INSUL’s files click the Browse button. To accept the default destination directory click the Next button.
7. You will be asked if you want to install INSUL for anyone who uses the computer or for the user only. It is normal to choose the default which is for anyone who uses the computer.



8. The program will now be installed and you can click Finish to exit the installation Wizard. You can now run the program from the normal Windows “Start “ menu. The About form should display. Click Ok.



9. INSUL will display a form allowing you to choose what materials databases you wish to display. It is recommended that you first choose to display just one region to avoid being overwhelmed by the number of materials. You can change this later from the settings menu.



10. If you have customised the user databases then you can copy these files from the version 7.0 installation to the version 8.0 installation. Navigate to the folder C:\Users\xxx\AppData\Roaming\Marshall Day Acoustics\Insul70\materials and copy the 5 xml files from there to C:\Users\KOB\AppData\Roaming\Marshall Day Acoustics\Insul80\materials. Note xxx refers to the user’s name. You can navigate to these folders by typing in %userprofile% and then browsing to AppData etc.